



Datasheet

Paperless recorder

SUP-6000C/SUP-5000C

**Supmea<sup>®</sup>**

Committed to process automation solutions

Tel: 86-15158063876

E-mail: [info@supmea.com](mailto:info@supmea.com)

[www.supmea.com](http://www.supmea.com)

---

## Datasheet

SUP-5000CPaperless recorder has universal input (Voltage, current, thermocouple, thermal resistance, millivolt, etc.). It can be equipped with relay out or analog output , RS485 communication interface, Ethernet interface, micro printer interface and USB interface, SD card socket; It can provide power distribution for sensor; It has powerful display function, real-time curve display, historical curve recall, and bar chart display, alarming list display, etc.

### Basic Functions

- Up to 48 channels of universal input
- UP to 18 Alarm Output Relays
- With 24V Power distribution Output
- Communication type: RS485, RS232C.
- With a USB data transfer interface
- SD card socket



### Display & Operation

SUP-5000C

- Multiple display Function : choose the display your way
- **SUP-5000C**Use date and time calendar search functions to Review historical data .
- 7 inch high brightness color graphics and color LCD (800 \* 480pixels)

### Reliability and Security

- Dust- and splash-proof front panel
- Power Fail Safeguard:All the data stored in Flash memory



### Power supply

SUP-6000C

- AC 85 ~ 264 V 50/60 Hz;
- DC12 ~ 36 V

**Parameter**

**Channels**

Input	SUP-5000C: 12 channels (Max) SUP-6000C: 48 channels (Max)
Output	SUP-5000C: 12 channels (Max) SUP-6000C: 48 channels (Max)

**Input**

Input signal      Current:  
0~20mA, 0~10mA, 4~20mA, 0~10mA square root, 4~20mA square root  
Voltage:  
0~5V, 1~5V, 0~10V, ±5V, 0~5V square root, 1~5V square root, 0~20 mV, 0~100mV, ±20mV, ±100mV  
Thermal resistance: Pt100, Cu50, Cu53, Cu100, BA1, BA2  
Linear resistance: 0~400 Ω  
Thermocouple: B, S, K, E, T, J, R, N, F2, Wre3-25, Wre5-26

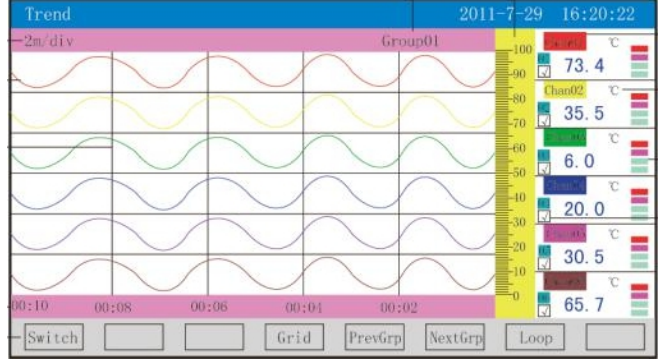
**Output**

Output signal      Analog output:  
4~20mA (load resistance ≤380 Ω)      0~20mA (load resistance ≤380 Ω)  
0~10mA (load resistance ≤760 Ω)      1~5V (load resistance ≥250K Ω)  
0~5V (load resistance ≥250K Ω)      0~10V (load resistance ≥500K Ω)  
Relay out: normally open relay contact output, contact capacity: 1 A/250 VAC  
Feed output: DC24 V ± 1, load current ≤ 250 mA  
Communication output: RS485/RS232 communication interface

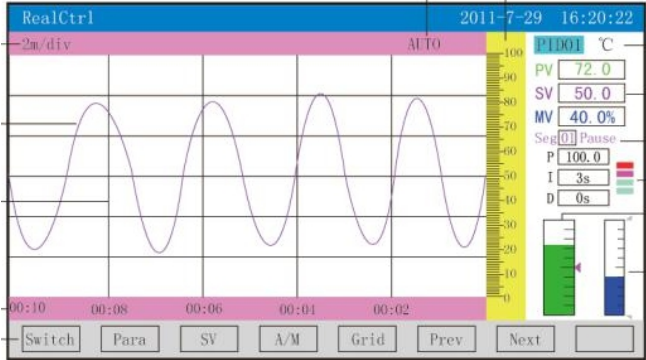
**Comprehensive parameters**

Accuracy	0.2%FS±1d
Sampling period	1 s
Data backup	USB flash disk and SD card are support, the maximum capacity is 8 GB; FAT and FAT32 formats
Storage capacity	The capacity of the internal Flash memory is 64 M Byte.
Recording interval	Nine options including 1, 2, 4, 6, 15, 30, 60, 120 and 140 s can be selected.

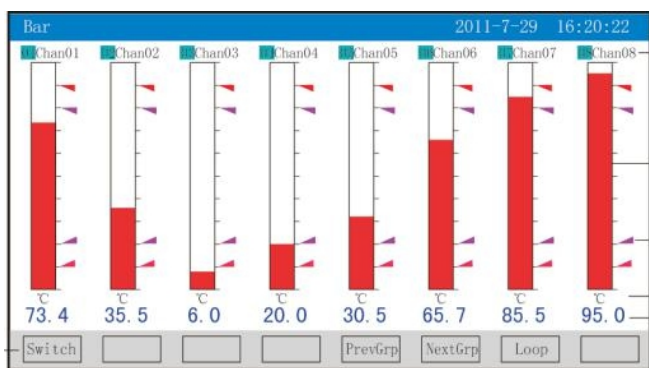
**Display**



**Real-time Curve**



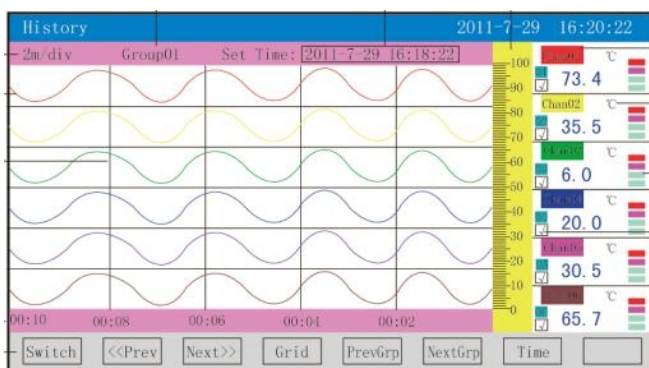
**Real-time Control**



Bar Graph



Digital Display



Historical Curve

No.	Chan	Name	Alarm Time	Clear Time	Type
013	01	Chan01	2011-7-29 16:00:22	2011-7-29 16:00:22	H
012	01	Chan01	2011-7-29 16:01:22	2011-7-29 16:01:22	HH
011	01	Chan01	2011-7-29 16:02:22	2011-7-29 16:02:22	H
010	01	Chan01	2011-7-29 16:03:22	2011-7-29 16:03:22	HH
009	01	Chan01	2011-7-29 16:04:22	2011-7-29 16:04:22	H
008	01	Chan01	2011-7-29 16:05:22	2011-7-29 16:05:22	HH
007	01	Chan01	2011-7-29 16:06:22	2011-7-29 16:06:22	H
006	01	Chan01	2011-7-29 16:07:22	2011-7-29 16:07:22	HH
005	01	Chan01	2011-7-29 16:08:22	2011-7-29 16:08:22	H
004	01	Chan01	2011-7-29 16:09:22	2011-7-29 16:09:22	HH
003	01	Chan01	2011-7-29 16:10:22	2011-7-29 16:10:22	H
002	01	Chan01	2011-7-29 16:11:22	2011-7-29 16:11:22	HH
001	01	Chan01	2011-7-29 16:12:22	2011-7-29 16:12:22	H

Alarm List

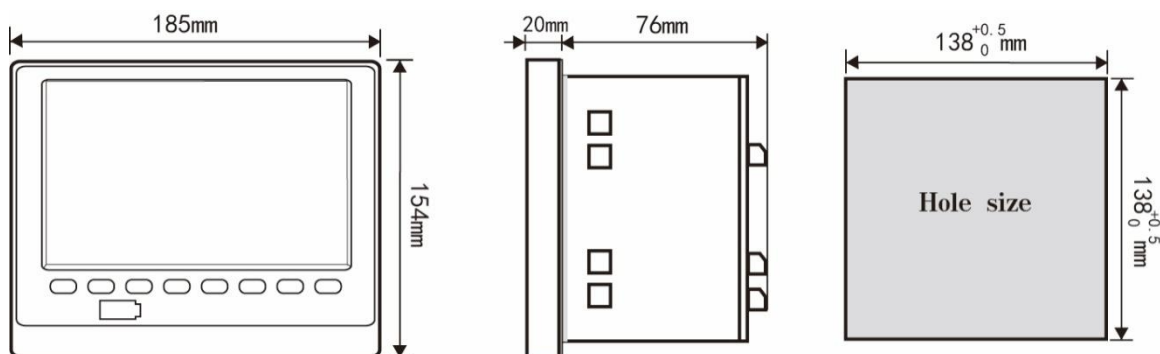
No.	Start Time	End Time	Int	Cond	Status
006	2011-7-29 15:30:10	2011-7-29 15:31:00	1S	Pwr	Recording
005	2011-7-29 15:30:10	2011-7-29 15:30:30	1S	Pwr	Poff stop
004	2011-7-29 15:29:10	2011-7-29 15:30:00	1S	Pwr	Man stop
003	2011-7-29 15:29:10	2011-7-29 15:29:30	1S	Pwr	Poff stop
002	2011-7-29 15:28:10	2011-7-29 15:29:00	1S	Pwr	Poff stop
001	2011-7-29 15:28:10	2011-7-29 15:28:30	1S	Pwr	Poff stop

File List

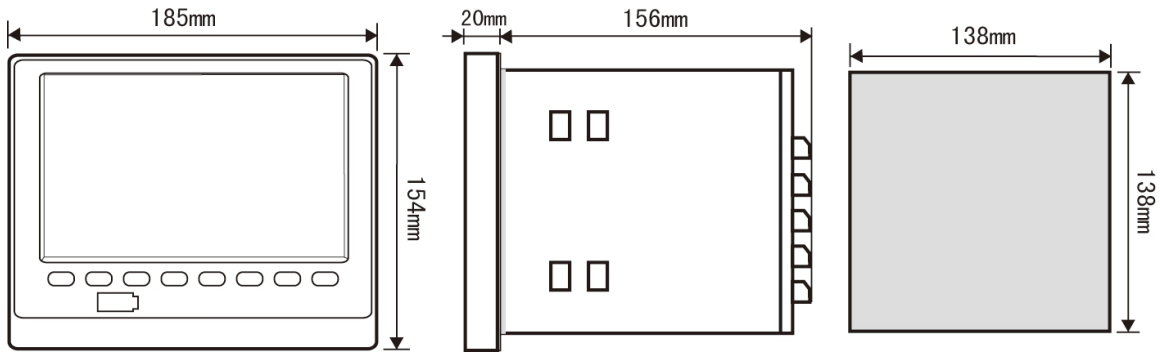
Print:    
 File No.   
 Start Time   
 End Time   
 Channel    
 Interval

Menu for Printing

Dimension: SUP-5000C



**Dimension: SUP-6000C**



**Ordering code**

SUP-5000C- SUP-6000C-		Description	
Channels	ITXX		XX Channel(1≤XX≤18)
Analog output	O0		Without output
	O1		1 channel output
	...		...
	O12		12 channels output
Communication	D0		Without communication
	D1		RS232
	D2		RS232 printing
	D3		RS485
Relay out	A0		Without relay output
	AXX		XX relay output(1≤XX≤18)
Power distribution		DO0	Without power distribution
		DO1	1 channel power distribution
Ethernet interface		ET0	Without Ethernet interface
		ET1	With Ethernet interface
USB interface		USB0	Without USB interface
		USB1	With USB interface
SD card		SD0	Without SD card
		SD1	With SD card
Power supply		V1	AC/DC 85 - 264V (50/60Hz)
		V2	DC 12 - 36V