

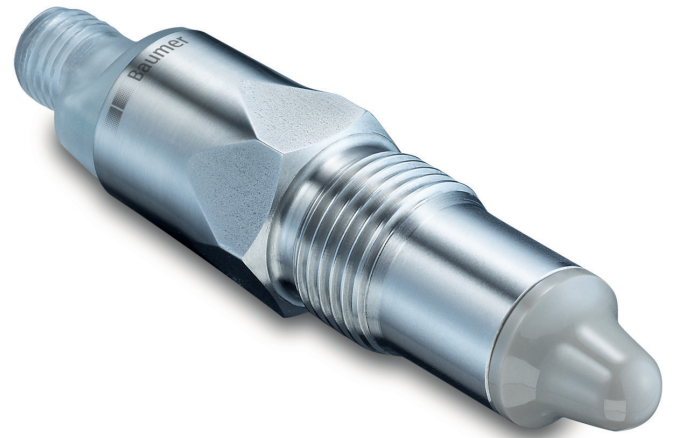
PL20H - Adaptive trigger

Point level detection based on frequency deviation technology in the hygiene sector

PL20H-1#####.11#012.A0302#0#003#

Overview

- Adaptive trigger
- Problem solver for adhesions
- Two adjustable switching outputs
- Possibility for analog output
- Applicable for use in open tanks
- 360° visible multicolor LED
- IO-Link interface



Technical data

Performance characteristics

Trigger modes	Adaptive trigger Window trigger Analog output
Measuring principle	CleverLevel level switches (Frequency Sweep)
Hysteresis	± 1 mm
Repeatability	± 1 mm
Media characteristics	DC > 1.5
Response time	< 150 ms
Damping	0 ... 10 s , adjustable

Process conditions

Process temperature	Refer to section "Operating conditions"
Process pressure	Refer to section "Operating conditions"

Process connection

Connection variants	Refer to section "Dimensional drawings"
Mounting position	Any, top, bottom, side
Wetted parts material	PEEK Natura AISI 316L (1.4404)
Surface roughness wetted parts	Ra ≤ 0.8 µm

Ambient conditions

Operating temperature range	-40 ... 85 °C -40 ... 60 °C , with 4 ... 20 mA output signal
Storage temperature range	-40 ... 85 °C
Degree of protection (EN 60529)	IP 67 IP 69K , with appropriate cable
Humidity	< 98 % RH , condensing
Vibration (EN 61373:2010)	Category 2 (bogie-mounted) Functional test: 5.4 m/s ² , 5...250 Hz, 10 min. per axis Life-time: 30.6 m/s ² , 5...250 Hz, 5 h per axis

Ambient conditions

Shock (EN 61373:2010)	Category 2 (bogie-mounted) 300 m/s ² , 18 ms, 3 impulses per axis and direction
-----------------------	---

Output signal

Output type	PNP NPN Digital (push-pull) 4...20 mA
Switching logic	Normally open (NO) Normally closed (NC) Active high Active low

Voltage drop	PNP: (+Vs -1.4 V) ± 0.5 V, Rload ≥ 10 kΩ NPN: (-Vs +0.6 V) ± 0.3 V, Rload ≥ 10 kΩ
Current rating	100 mA , max.
Off leak current	< 100 µA , max.
Short circuit protection	Yes

Interface	IO-Link 1.1
-----------	-------------

IO-Link interface

Version	1.1
Port type	Class A
Transmission rate	38,4 kbaud (COM2)
Min. cycle time	6.4 ms
SIO-mode	Yes

Housing

Style	Compact transmitter
Overall size	Refer to section "Dimensional drawings"
Material	Stainless steel

Electrical connection

Connector	M12-A, 4-pin, polycarbonate M12-A, 4-pin, stainless steel
-----------	--

Power supply

Voltage supply range	8 ... 35 V DC
----------------------	---------------

PL20H - Adaptive trigger

Point level detection based on frequency deviation technology in the hygiene sector

PL20H-1#####.11#012.A0302#0#003#

Technical data

Power supply

Current consumption (no load)	25 mA , typ. 53 mA , max.
Power-up time	< 1.5 s
Reverse polarity protection	Yes

Factory settings – Adaptive trigger

Switching logic	Normally open (NO)
Advanced setup	Disabled
Set point low	0 %
Set point high	100 %
Damping	0 ms
Steady detection	Active

Factory settings – Window trigger

Switching logic	Normally open (NO)
-----------------	--------------------

Factory settings – Window trigger

Switch window, min.	0 %
Switch window, max.	75.3 %
Switch window, hysteresis	2.4 %
Damping	0.1 s

Compliance and approvals

EMC Emission	EN 61326-1:2013
	EN 50121-3-2:2016
EMC Immunity	EN 61326-1:2013
	EN 50121-3-2:2016
Hygiene	3-A (74-07)
	EHEDG (pending)
	FDA (21 CFR 177.2415)

Operating conditions

Ordering key	Process connection	BCID	Continuous		Temporary (t < 1 h)	
			Process temperature @ Tamb < 50 °C	Process pressure	Process temperature max. @ Tamb < 50 °C	Process pressure max. @ Process temperature max.
			(° C)	(bar)	(° C)	(bar)
A030	G 1/2 A hygienic	A03	-40 ... 115	-1 ... 10	135	-1 ... 5

For further information regarding operating conditions please see the graph of the different types of internal O-rings.

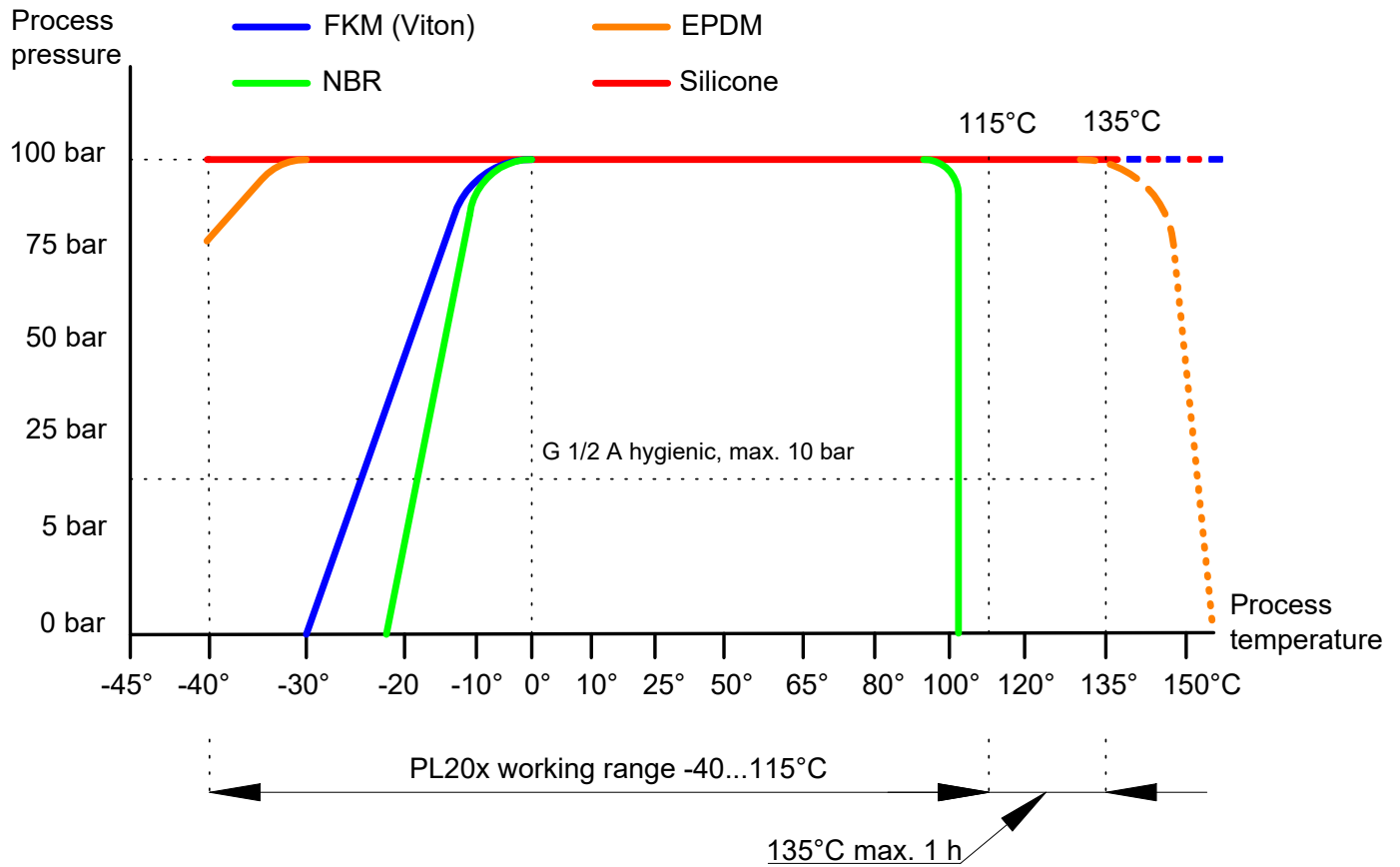
PL20H - Adaptive trigger

Point level detection based on frequency deviation technology in the hygiene sector

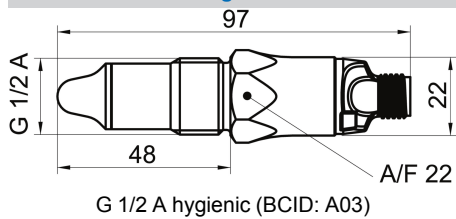
PL20H-1#####.11#012.A0302#0#003#

Operating conditions

Internal O-ring type



Dimensional drawings



PL20H - Adaptive trigger

Point level detection based on frequency deviation technology in the hygiene sector

PL20H-1#####.11#012.A0302#0#003#

Electrical connection

Process connection

Output type	Equivalent circuit	Electrical connection	Function	Pin assignment
Programmable output IO-Link PNP			+Vs	1
			SW1 (IO-Link)	4
			SW2	2
Programmable output IO-Link NPN			+Vs	1
			SW1 (IO-Link)	4
			SW2	2
Programmable output IO-Link Digital (push-pull)			+Vs	1
			SW1 (IO-Link)	4
			SW2	2
			GND (0 V)	3
			Frame Ground	Plug thread

PL20H - Adaptive trigger

Point level detection based on frequency deviation technology in the hygiene sector

PL20H-1####.11#012.A0302#0#003#

Electrical connection

Process connection

Output type	Equivalent circuit	Electrical connection	Function	Pin assignment
Programmable output IO-Link + Analog 4...20 mA PNP			+Vs	1
			SW1 (IO-Link)	4
			lout	2
			GND (0 V)	3
Programmable output IO-Link + Analog 4...20 mA NPN			+Vs	1
			SW1 (IO-Link)	4
			lout	2
			GND (0 V)	3
			Frame Ground	Plug thread
Programmable output IO-Link + Analog 4...20 mA Digital (push-pull)			+Vs	1
			SW1 (IO-Link)	4
			lout	2
			GND (0 V)	3
			Frame Ground	Plug thread

Ordering information

Ordering key - Configuration possibilities see website

	PL20H	-	1	#	#	#	#	.	1	1	#	0	1	2	.	A030	2	#	0	#	0	0	3	#
Product	Level switches																							
Version	Adaptive trigger																							
Trigger mode Switch 1	Adaptive trigger																							
	Window trigger																							
Trigger mode Switch 2	Adaptive trigger																							
	Window trigger																							
	Analog (4...20 mA)																							
Output type switch 1	PNP																							
	NPN																							
	Digital (push-pull)																							

2020-01-23 The product features and technical data specified do not express or imply any warranty. Technical modifications subject to change.

PL20H - Adaptive trigger

Point level detection based on frequency deviation technology in the hygiene sector

PL20H-1####.11#012.A0302#0#003#

Ordering information

Ordering key - Configuration possibilities see website

PL20H - 1 # # # # . 1 1 # 0 1 2 . A030 2 # 0 # 0 0 3 #

Output type switch 2

PNP	1
NPN	2
Digital (push-pull)	3
Analog (4...20 mA)	4

Interface

I/O-link	1
----------	---

Protection class

IP 67, IP69K	1
--------------	---

Electrical connection

M12-A, 4-pin, polycarbonate (with LED)	1
M12-A, 4-pin, stainless steel (without LED)	2

Cable length

Without cable	0
---------------	---

Process temperature

-40...115 °C	1
--------------	---

Max. process pressure

10 bar	2
--------	---

Process connection

G 1/2 A hygienic (A03)	A030
------------------------	------

Wetted parts material

AISI 316L (1.4404)	2
--------------------	---

Surface roughness

Ra ≤ 0,8 µm	1
Ra ≤ 0,4 µm	2

Gasket material (external)

Without	0
---------	---

Sealing-/ O-ring (internal)

NBR	1
FKM /Viton	2
EPDM	3
Silicone	4

Explosion protection

Without	0
---------	---

Industrial approvals

Standard	0
----------	---

Special approvals

3-A / EHEDG	3
-------------	---

Configuration

Factory settings	0
Customer-specific	1